

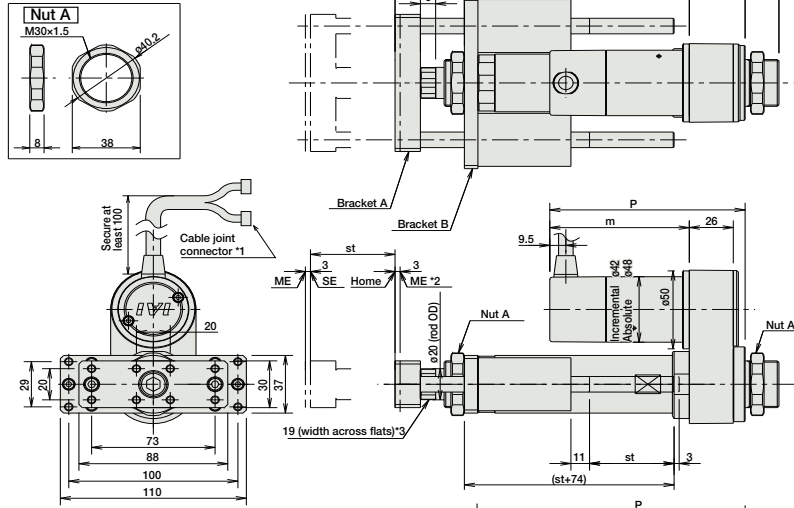


Dimensions

For Special Orders P. A-9

- \*1 A motor-encoder cable is connected here. See page A-39 for details on cables.
- \*2 When homing, the rod moves to the ME; therefore, please watch for any interference with the surrounding objects.
- ME: Mechanical end SE: Stroke end
- \*3. The orientation of the bolt will vary depending on the product.

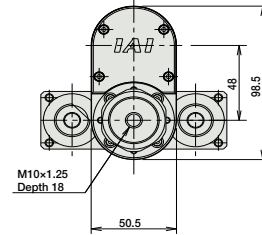
[No Brake]



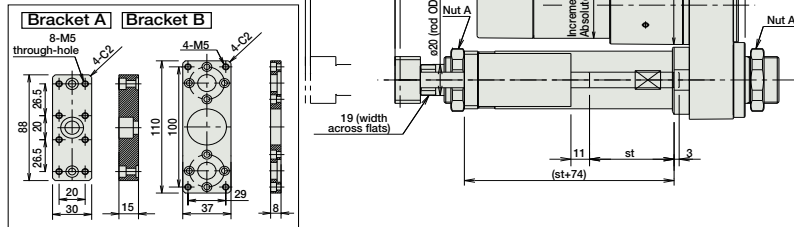
■ Dimensions/Weight by Stroke

RCA-RGD4R (without brake)

| Stroke      | RCA-RGD4R (without brake) |     |     |     |     |     |       |
|-------------|---------------------------|-----|-----|-----|-----|-----|-------|
|             | 50                        | 100 | 150 | 200 | 250 | 300 |       |
| L           | 20W Incr.                 | 227 | 277 | 327 | 377 | 427 | 477   |
|             | 20W Absol.                | 227 | 277 | 327 | 377 | 427 | 477   |
| 30W         | Incr.                     | 227 | 277 | 327 | 377 | 427 | 477   |
|             | Absol.                    | 227 | 277 | 327 | 377 | 427 | 477   |
| ℓ           |                           | 133 | 188 | 233 | 288 | 333 | 383   |
| m           | 20W Incr.                 |     |     |     |     |     | 67.5  |
|             | 20W Absol.                |     |     |     |     |     | 80.5  |
| 30W         | Incr.                     |     |     |     |     |     | 82.5  |
|             | Absol.                    |     |     |     |     |     | 95.5  |
| P           | 20W Incr.                 |     |     |     |     |     | 100.5 |
|             | 20W Absol.                |     |     |     |     |     | 113.5 |
| 30W         | Incr.                     |     |     |     |     |     | 115.5 |
|             | Absol.                    |     |     |     |     |     | 128.5 |
| Weight (kg) |                           | 1.9 | 2.2 | 2.3 | 2.6 | 2.7 | 3.0   |



[Brake-Equipped]



RCA-RGD4R (with brake)

| Stroke      | RCA-RGD4R (with brake) |     |     |     |     |     |       |
|-------------|------------------------|-----|-----|-----|-----|-----|-------|
|             | 50                     | 100 | 150 | 200 | 250 | 300 |       |
| L           | 20W Incr.              | 227 | 277 | 327 | 377 | 427 | 477   |
|             | 20W Absol.             | 227 | 277 | 327 | 377 | 427 | 477   |
| 30W         | Incr.                  | 227 | 277 | 327 | 377 | 427 | 477   |
|             | Absol.                 | 227 | 277 | 327 | 377 | 427 | 477   |
| ℓ           |                        | 133 | 188 | 233 | 288 | 333 | 383   |
| m           | 20W Incr.              |     |     |     |     |     | 110.5 |
|             | 20W Absol.             |     |     |     |     |     | 123.5 |
| 30W         | Incr.                  |     |     |     |     |     | 125.5 |
|             | Absol.                 |     |     |     |     |     | 138.5 |
| P           | 20W Incr.              |     |     |     |     |     | 143.5 |
|             | 20W Absol.             |     |     |     |     |     | 156.5 |
| 30W         | Incr.                  |     |     |     |     |     | 158.5 |
|             | Absol.                 |     |     |     |     |     | 171.5 |
| Weight (kg) |                        | 2.1 | 2.4 | 2.5 | 2.8 | 2.9 | 3.2   |

③ Compatible Controllers

The RCA series actuators can operate with the controllers below. Select the controller according to your usage.

| Name  | External View | Model  | Description   | Max. Positioning Points | Input Voltage | Power Supply Capacity  | Standard Price | See Page |
|---|---------------|--|---|-------------------------|---------------|--|----------------|----------|
| Solenoid Valve Type                               |               | AMEC-C-20①②-NP-2-1<br>AMEC-C-30①②-NP-2-1     | Easy-to-use controller, even for beginners  | 3 points                | AC100V        | 2.4A rated   | -              | → P477   |
|   |               | ASEP-C-20①②-NP-2-0<br>ASEP-C-30①②-NP-2-0     | Operable with same signal as solenoid valve. Supports both single and double solenoid types. No homing necessary with simple absolute type. |                         |               |  |                | → P487   |
| Splash-Proof Solenoid Valve Type                  |               | ASEP-CW-20①②-NP-2-0<br>ASEP-CW-30①②-NP-2-0   |   |                         |               |  |                |          |
| Positioner Type                                   |               | ACON-C-20①②-NP-2-0<br>ACON-C-30①②-NP-2-0     | Positioning is possible for up to 512 points  | 512 points              |               |  |                |          |
| Safety-Compliant Positioner Type                  |               | ACON-CG-20①②-NP-2-0<br>ACON-CG-30①②-NP-2-0   |   |                         |               |  |                |          |
| Pulse Train Input Type (Differential Line Driver) |               | ACON-PL-20①②-NP-2-0<br>ACON-PL-30①②-NP-2-0   | Pulse train input type with differential line driver support  | (-)                     | DC24V         | 20W<br>1.3A rated<br>4.4A peak<br><br>30W<br>1.3A rated<br>4.4A peak |                | → P535   |
| Pulse Train Input Type (Open Collector)           |               | ACON-PO-20①②-NP-2-0<br>ACON-PO-30①②-NP-2-0   | Pulse train input type with open collector support  |                         |               |  |                |          |
| Serial Communication Type                         |               | ACON-SE-20①②-N-0-0<br>ACON-SE-30①②-N-0-0     | Dedicated to serial communication   | 64 points               |               |  |                |          |
| Field Network Type                                |               | RACON-20②<br>RACON-30②                       | Dedicated to field network  | 768 points              |               |  |                | → P503   |
| Program Control Type                              |               | ASEL-C-1-20①②-NP-2-0<br>ASEL-C-1-30①②-NP-2-0 | Programmed operation is possible<br>Operation is possible on up to 2 axes   | 1500 points             |               |  |                | → P567   |

\* This is for the single-axis ASEL.  
 \* ① is a placeholder for the encoder type (I: incremental / A: absolute).  
 \* ② is a placeholder for the code "LA" if the power-saving option is specified.

- Slider Type
- Mini
- Standard
- Controllers Integrated
- Rod Type
- Mini
- Standard
- Controllers Integrated
- Table/Arm /Flat Type
- Mini
- Standard
- Gripper/ Rotary Type
- Linear Servo Type
- Cleanroom Type
- Splash Proof
- Controllers
- PMEC /AMEC
- PSEP /ASEP
- ROBO NET
- ERC2
- PCON
- ACON
- SCON
- PSEL
- ASEL
- SSEL
- XSEL
- Pulse Motor
- Servo Motor (24V)
- Servo Motor (200V)
- Linear Servo Motor